



**28 Belgrave Mews  
Uxbridge, UB8 3AG  
£1,989 PCM**

**Deposit required £2,295**

**Available date 7th August  
2026**

**\*\*STUDENTS\*\***

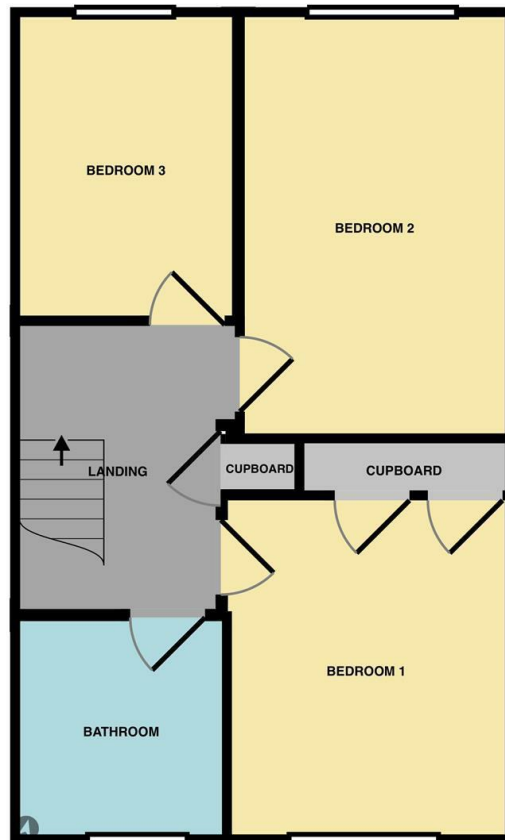
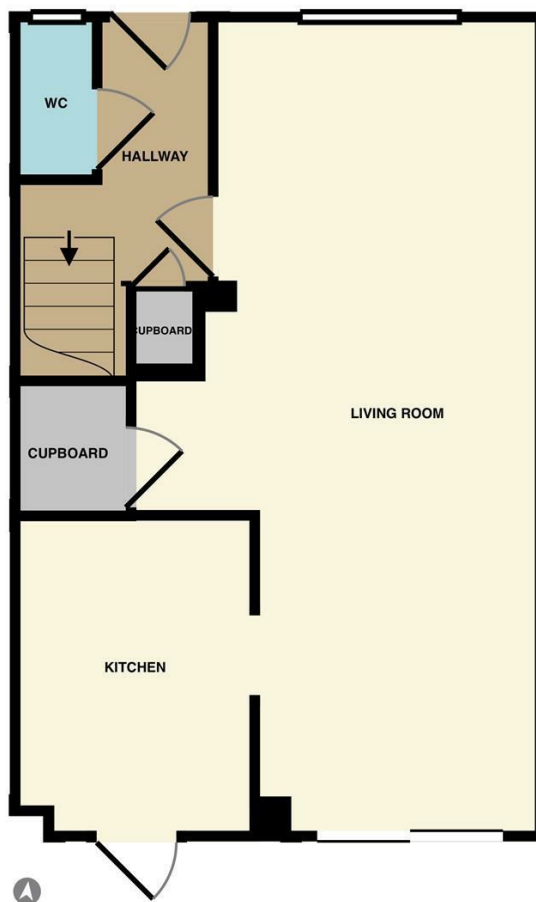
**3 BEDROOMS - AVAILABLE 07/08/2026**

The rental payments equate to approx £663 per person per month or £153 per person per week excluding bills. UniHomes offer a bills package for £30 per person per week. (Incl Gas, Electric, Water, TV licence and internet) which can be organised through Nupad initially.

COUNCIL TAX BAND D  
EPC D

Nupad offer this excellent Three-bedroom house comprising of THREE FURNISHED BEDROOMS , a large LOUNGE/dining room, BATHROOM AND KITCHEN facilities. Outside and enclosed rear garden.

The property is ideal for students at Brunel University as it is only 0.3 miles or 6-minute walk to campus. It is also nearby to direct bus routes to Uxbridge Town Centre, Heathrow, Stockley Park and the local underground station, which provides further access to Central London.



Energy Efficiency Rating		
	Current	Potential
Very energy efficient - lower running costs		
(92 plus) <b>A</b>		
(81-91) <b>B</b>		
(69-80) <b>C</b>		
(55-68) <b>D</b>		
(39-54) <b>E</b>		
(21-38) <b>F</b>		
(1-20) <b>G</b>		
Not energy efficient - higher running costs		
<b>England &amp; Wales</b>	EU Directive 2002/91/EC	

Environmental Impact (CO <sub>2</sub> ) Rating		
	Current	Potential
Very environmentally friendly - lower CO <sub>2</sub> emissions		
(92 plus) <b>A</b>		
(81-91) <b>B</b>		
(69-80) <b>C</b>		
(55-68) <b>D</b>		
(39-54) <b>E</b>		
(21-38) <b>F</b>		
(1-20) <b>G</b>		
Not environmentally friendly - higher CO <sub>2</sub> emissions		
<b>England &amp; Wales</b>	EU Directive 2002/91/EC	